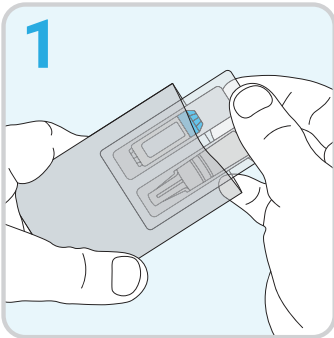
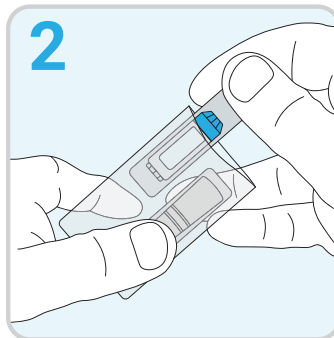


Self-Collection Kit Instructions

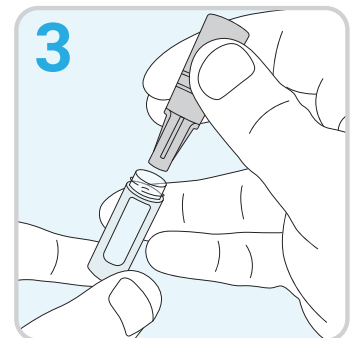
- This kit is for saliva collection only.
- Do not deposit mucus, phlegm, blood, other substances, or foreign objects.
- Do not eat, drink, smoke, chew gum, or brush your teeth at least 30 minutes prior to providing your sample.
- Do not use mouthwash for at least 2 hours prior to providing your sample.



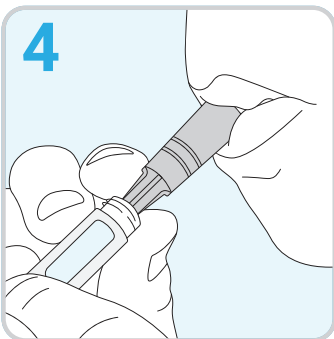
1
Open collection kit sample bag and remove all contents.



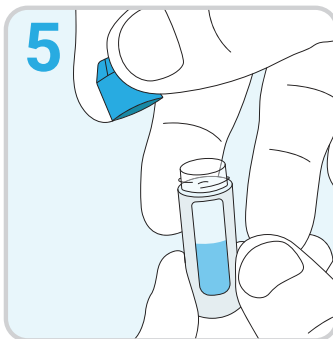
2
Take sample collection tube and saliva straw out of sterile package.



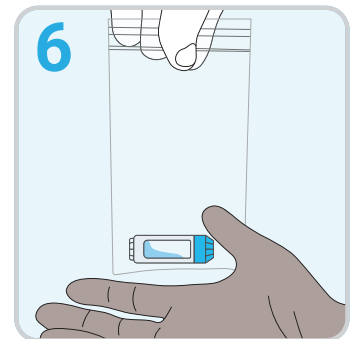
3
Unscrew collection tube cap and insert ridged end of saliva straw into tube.



4
Pool saliva in mouth and push saliva into tube until at least half full (1 mL).



5
Remove and discard straw and securely cap collection tube.



6
Place collection tube in sample kit bag, seal, and return to collection site.